



OAKFIELD



Battle Road, St Leonards-On-Sea  
£2,000 Per Calendar Month

4 2 1 A

# SUMMARY

---

A beautifully presented, brand new four-bedroom home finished to exacting standards, offering deceptively spacious house arranged over three floors.

The heart of the home is a bright, double-aspect open-plan kitchen/living room featuring wide bi-fold doors opening directly onto the garden, creating an excellent space. The contemporary fully fitted kitchen includes integrated appliances and ample workspace.

The property offers four well-proportioned bedrooms arranged over the first and second floors, all benefiting from recessed lighting and excellent natural light. A stylish family bathroom is located on the first floor, complemented by a shower room on the second floor, making it ideal for use as a principal bedroom suite. Additional features include generous built-in and eaves storage.

Further benefits include air-source heating, underfloor heating to the ground floor, radiators to the upper floors, high levels of insulation, solar panels, triple-glazed windows, and an electric car charging point.

Externally, the property enjoys fully enclosed, wrap-around gardens with block-paved and Indian sandstone patios. To the front, a shared turning area provides access to two to three allocated parking spaces along with visitor parking.

Please note:

An annual household income of 60,000 will be required to meet



the affordability criteria for this property.  
Available Mid May 2026.



**Living Room**  
15'1" x 14'11"

**Kitchen**  
17'8" x 7'6"

**Bedroom One**  
11'8" x 11'6"

**Bedroom Two**  
11'6" x 7'6"

**Bedroom Three**  
13'3" x 7'8"

**Bedroom Four**  
8'2" x 6'9"

**Bathroom**  
7'3" x 6'10"

**Shower Room**  
7'10" x 6'2"

**WC**  
5'2" x 2'11"

**Council Tax Band C - £2,379.19 Per annum**















# INFORMATION

---

## Local Authority

Hastings Borough Council

## Council Tax Band

C

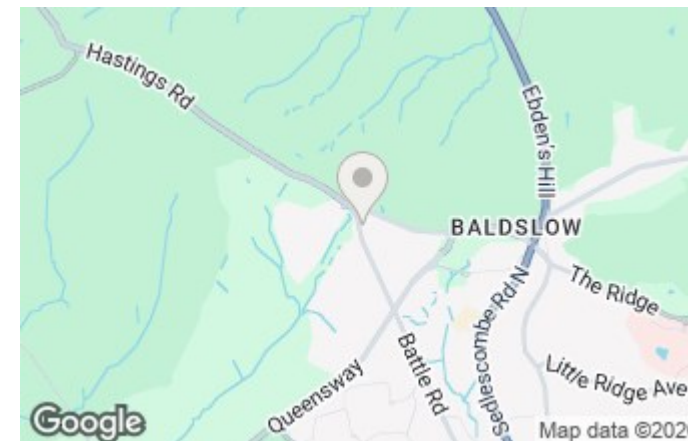
## Opening Hours

Monday to Friday	9.00am - 5.30pm
Saturday	9.00am - 4.00pm

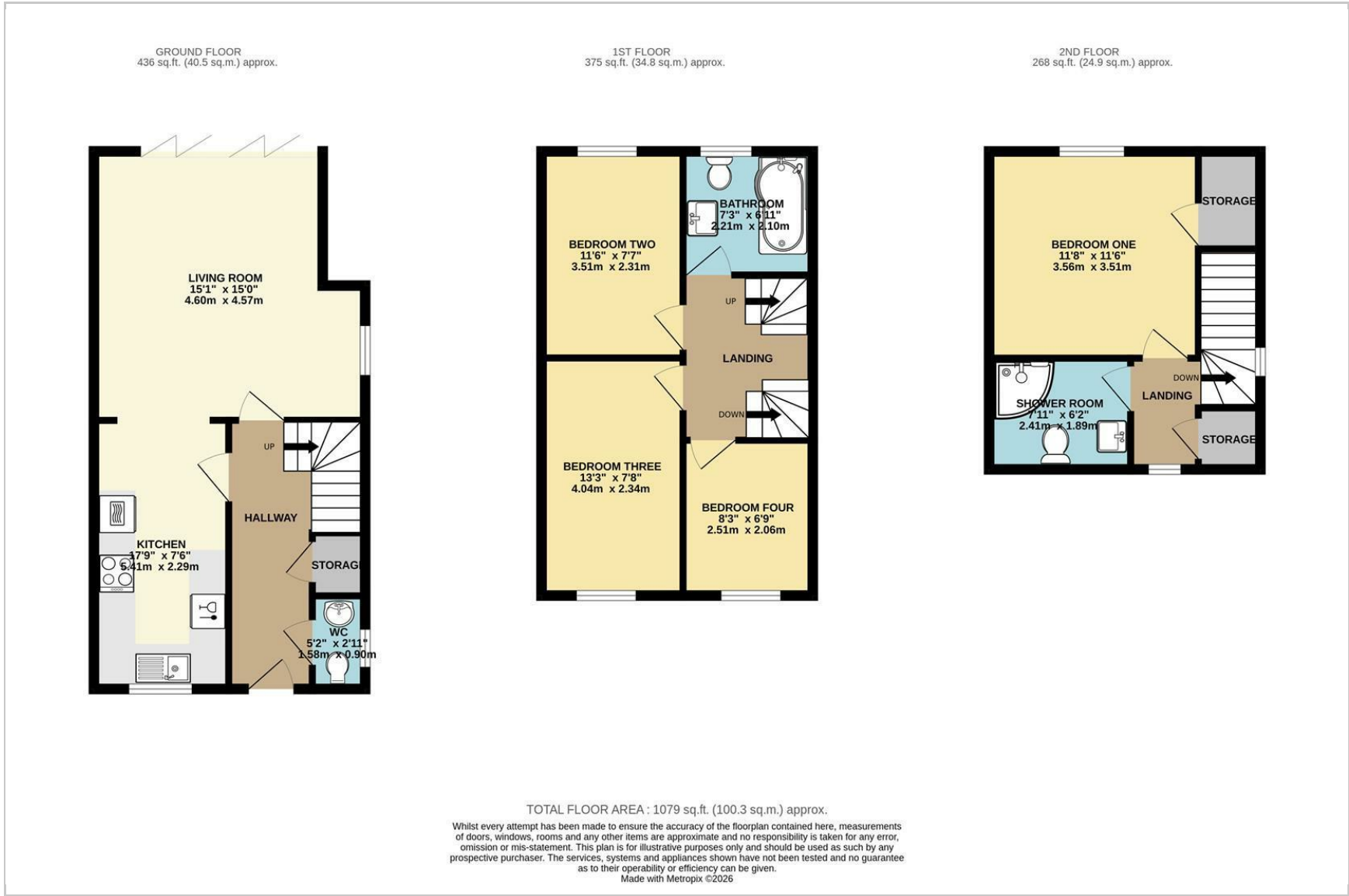
## Viewings

Please contact us on 01424 446644 if you wish to arrange a viewing appointment for this property or require further information.

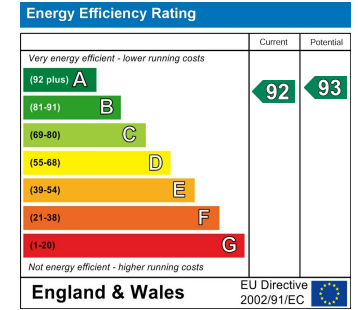
## Area Map



# Floorplan



# Energy Efficiency Graph



These particulars, whilst believed to be accurate are set out as a general outline only for guidance and do not constitute any part of an offer or contract. Intending purchasers should not rely on them as statements of representation of fact, but must satisfy themselves by inspection or otherwise as to their accuracy. No person in this firm's employment has the authority to make or give any representation or warranty in respect of the property.